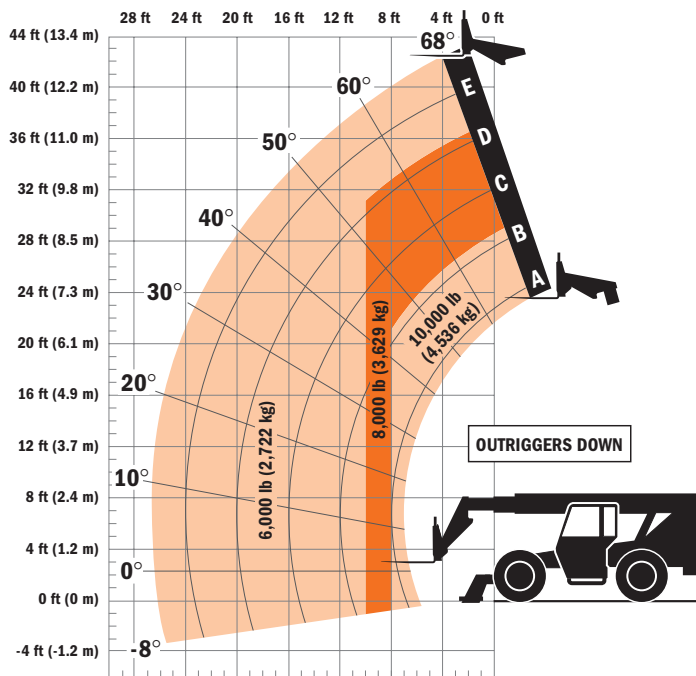
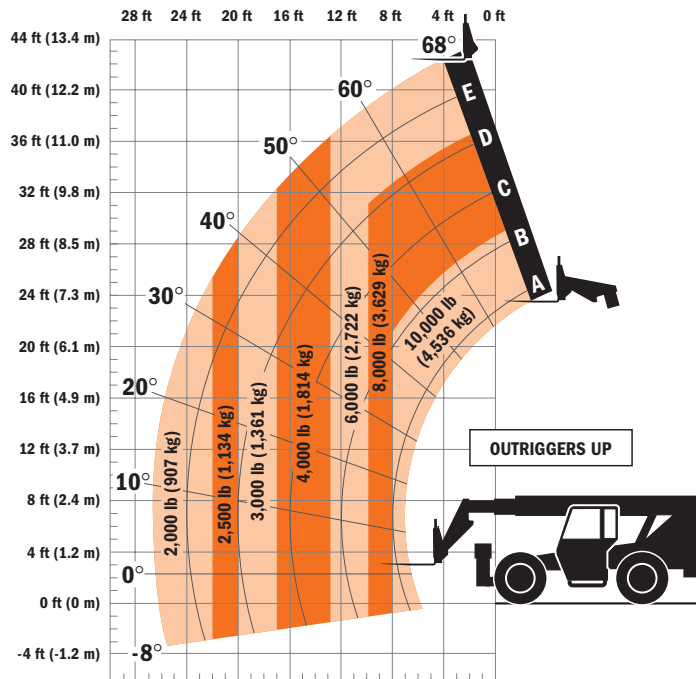


# Model 10042 TELEHANDLER



### Dimensions

- Length (less forks) . . . 225.2 in. (5.72 m)
- Width . . . . . 102 in. (2.59 m)
- Height . . . . . 100.1 in. (2.54 m)
- Wheelbase . . . . . 119.5 in. (3.03 m)
- Ground Clearance . . . . 18 in. (457 mm)
- Outside Turning Radius . . 164 in. (4.16 m)
- Max. Reach from Front Tires to  
24 in. (609 mm) Load Center . . . 26.5 ft  
(8.07 m)

### IMPORTANT

Rated lift capacities shown are with machine equipped with carriage and pallet forks. The machine must be level on a firm surface with undamaged, properly inflated tires. Machine specifications and stability are based on rated lift capacities at specific boom angles and boom lengths. (If specifications are critical, the proposed application should be discussed with your dealer.)

DO NOT exceed rated lift capacity loads, as unstable and dangerous machine conditions will result.

DO NOT tip the machine forward to determine the allowable load.

Use only JLG approved attachments with proper material handler model/attachment load capacity charts displayed in the operator's cab. OSHA requires all rough terrain forklift operators be trained according to OSHA 29 CFR 1910.178 (1).

*Due to continuous product improvements, JLG Industries reserves the right to make specification and/or equipment changes without prior notification. This machine meets or exceeds ASME B56.6-1998 as originally manufactured for intended applications.*

Form No.: SS-ST10042-0104-15M  
Part No.: 3132401  
R090501  
Printed in USA

### JLG Industries, Inc.

1 JLG Drive  
McCconnellsburg, PA 17233-9533  
Telephone 717-485-5161  
Toll-free in US 877-JLG-LIFT  
Fax 717-485-6417  
www.jlg.com