



Model

G12-55A

TELEHANDLER

Performance

Rated Capacity

At 24 in. (610 mm) load center,
12,000 lb (5,443 kg)

Maximum Lift Height

55 ft (16.8 m)

Frame Leveling

10 degrees

Lift Speed (boom retracted)

Up: 15.8 sec
Down: 18.3 sec

Boom Speed

Extend: 17.3 sec
Retract: 16.8 sec

Travel Speed Forward

20 mph (32 kmph)

Drawbar Pull (loaded)

20,000 lb (9,072 kg)

Operating Weight

With 48 in. (1.2 m) carriage and forks,
35,100 lb (15,921 kg)

Standard Specifications

Engine

Make and Model	Perkins 1104D
	Turbocharged and Aftercooled
Fuel	No. 2 Diesel
Cycles	4
No. of Cylinders	4
Displacement	276 cu in (4.5 L)
Rated Speed	2,400 rpm
Max. Gross BHP	140 hp (104 kW)
Fuel Tank	38 gal (144 L)
Glow plugs and block heater.	

Engine Filters

Two-stage dry air cleaner — centrifugal pre-cleaner with continuous dust ejector and replaceable dry filter element.
Visual service indicator.
Replaceable element-type fuel filter.
Full-flow replaceable-element engine oil filter.

Electrical System

Voltage — 12V
Alternator — 65 amp
Battery — 1050 Cold Cranking amps at 0°F

Transmission

ZF WG98 powershift with torque converter
4 speeds forward, 3 reverse.
Neutral start switch (Park brake must be engaged to start).
Full time 4-wheel drive.
Directional and gear change control on single steering mounted lever.

Axles

Trunnion mounted planetary 45° steer axles.
Integral steer cylinder.
High bias limited slip differential on front axle.

Service Brakes

Inboard wet disc brake on front and rear axles.

Parking Brakes

Wet disc spring-applied hydraulic release on front axle.
Light on dashboard indicates when brake is on.

Tires

17.5 x 25 — 12PR, G2 type.

Cab

Certified ROPS/FOPS structure, horn and adjustable seat.

Forward, neutral, reverse lever on left of steering column.

Steering

Hydraulic power steering with manual backup.
Operator selectable 4-wheel circle, 4-wheel crab, 2-wheel front.

Instruments

Volt meter, hourmeter, engine oil pressure, temperature, fuel gauge.
All gauges protected by clear acrylic cover.

Controls

Grouped for operator comfort and convenience.
Key operated ignition/starter switch.
Boom lift, crowd and fork tilt on single joystick.
Right-hand sway and outrigger levers.
Foot throttle.

Hydraulic System-Implement

Load sense piston pump.
60 gal (227.1 L) system capacity.
10 micron filter with visual service indicator and suction strainer.
Lift, crowd, tilt, sway and outrigger cylinders have holding valves intended to prevent dropping of load in the event of hose or other hydraulic failure.

Auxiliary Hydraulics

Accessories & Options

Enclosed Cab

Air Conditioning

Auxiliary Electrics

AccuPlace™ with Ride Control

Arctic Package

Work lights

Road lights

Rotating beacon

Pintle Hook

Fenders

Brick guard

Tires:

Foam-filled
Rock
Solid

Attachments

Standard Carriage

50 in. (1.3 m) or 60 in. (1.5 m) or 72 in. (1.8 m)

Side-Tilt Carriage

50 in. (1.3 m) or 60 in. (1.5 m) or 72 in. (1.8 m)

Swing Carriage

72 in. (1.8 m); 90 degrees or 180 degrees

Sheet Material Adapter

Tower

8 ft (2.4 m); 50 in. (1.3 m) Standard or Side-Tilt Carriage*

Pallet Forks

2.36 x 5 x 48 in. (60 mm x 127 mm x 1.2 m)
2.00 x 6 x 72 in. (51 mm x 152 mm x 1.8 m)

Lumber Forks

1.75 x 7 x 60 in. (44 mm x 178 mm x 1.5 m)
2.36 x 6 x 60 in. (60 mm x 152 mm x 1.5 m)

Cubing Forks

2 x 2 x 48 in. (51 mm x 51 mm x 1.2 m)

Material Bucket

72 in. (1.8 m), 1.0 cu yd (0.76 m³)
96 in. (2.4 m), 1.5 cu yd (1.15 m³)
102 in. (2.6 m), 2.0 cu yd (1.53 m³)

Grapple Bucket

96 in. (2.4 m), 1.75 cu yd (1.34 m³)

Truss Boom

12 ft (3.7 m), 2,000 lb (907 kg) capacity
15 ft (4.6 m), 2,000 lb (907 kg) capacity
12 ft (3.7 m) with winch,
2,000 lb (907 kg) capacity

Fork Mounted Work Platform

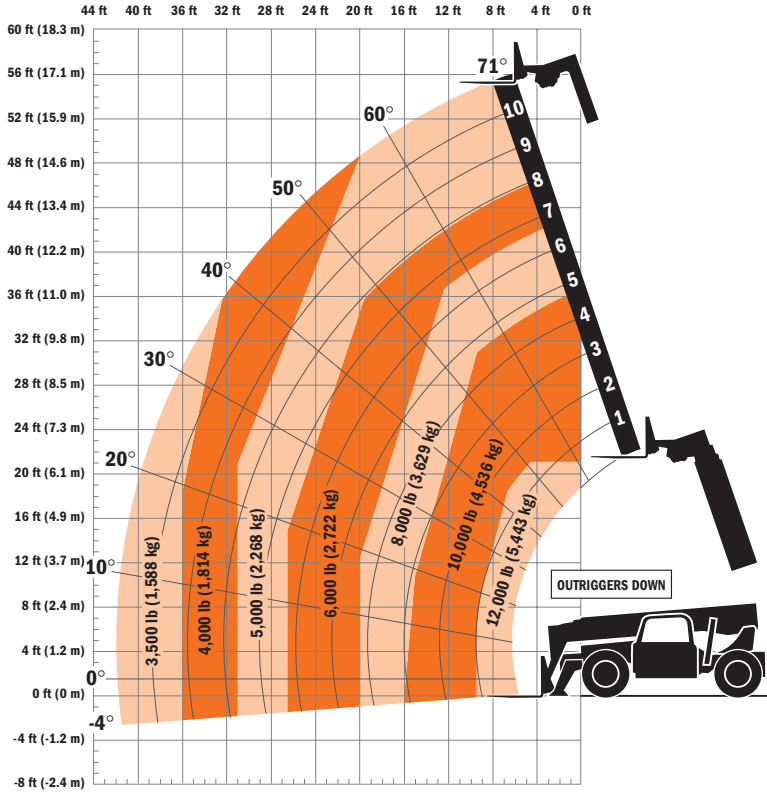
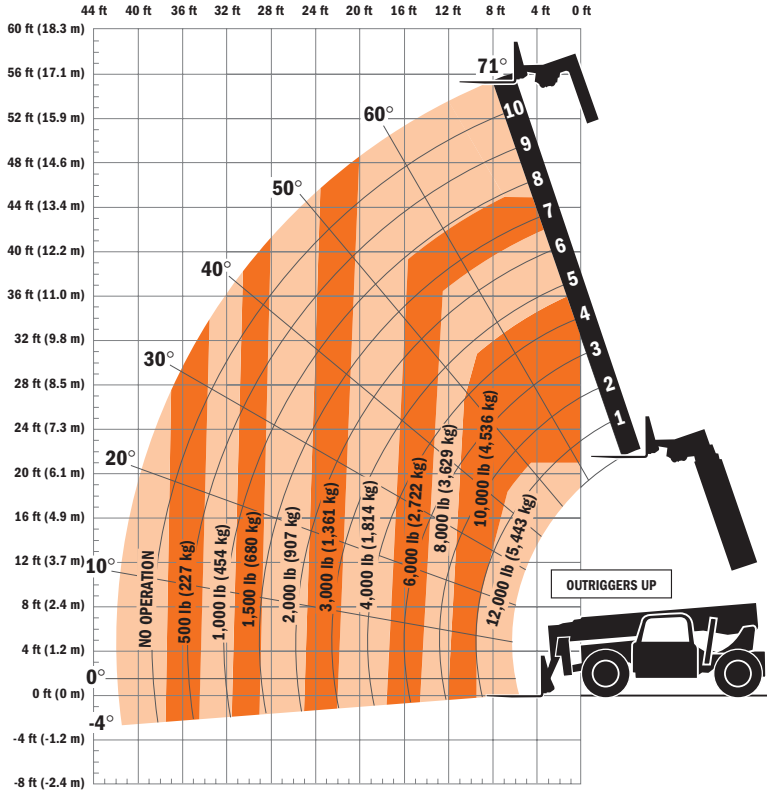
8 ft (2.4 m), 1,000 lb (455 kg) capacity

Lifting Hook

*Requires auxiliary electrics



Model G12-55A TELEHANDLER



Due to continuous product improvements, JLG Industries reserves the right to make specification and/or equipment changes without prior notification. This machine meets or exceeds ANSI/ITSDF B56.6-2005 as originally manufactured for intended applications.

Form No.: SS-G642A-0204-10M
Part No.: 3132211
R020904
Printed in USA

Dimensions

Length (less forks)	243.8 in. (6.2 m)
Width	102 in. (2.59 m)
Height	101 in. (2.56 m)
Wheelbase	144 in. (3.65 m)
Ground Clearance	18 in. (457 mm)
Outside Turning Radius	168 in. (4.27 m)
Max. Reach from Front Tires to 24 in. (610 mm) Load Center	42 ft (12.8 m)

IMPORTANT

Rated lift capacities shown are with machine equipped with carriage and pallet forks. The machine must be level on a firm surface with undamaged, properly inflated tires. Machine specifications and stability are based on rated lift capacities at specific boom angles and boom lengths. (If specifications are critical, the proposed application should be discussed with your dealer.)

DO NOT exceed rated lift capacity loads, as unstable and dangerous machine conditions will result.

DO NOT tip the machine forward to determine the allowable load.

Use only JLG approved attachments with proper material handler model/attachment load capacity charts displayed in the operator's cab. OSHA requires all rough terrain forklift operators be trained according to OSHA 29 CFR 1910.178 (L)



JLG Industries, Inc.
1 JLG Drive
McConnellsburg, PA 17233-9533
Telephone 717-485-5161
Toll-free in US 877-JLG-LIFT
Fax 717-485-6417
www.jlg.com

An Oshkosh Corporation Company