

Model 6042 TELEHANDLER



Performance

- Rated Capacity**
6,000 lb (2,722 kg)
- Maximum Lift Height**
41 ft 11 in. (12.7 m)
- Frame Leveling**
10 degrees
- Lift Speed (boom retracted)**
Up: 17.5 sec
Down: 11 sec
- Boom Speed**
Extend: 19 sec
Retract: 19 sec
- Travel Speed Forward**
20 mph (32 kmph)
- Drawbar Pull**
23,580 lb (10,695 kg)
- Operating Weight**
With 48 in. Carriage and Forks
24,280 lb (11,013 kg)

Standard Specifications

- Engine**
 - Make and Model Cummins QSB3.3
 - Fuel Diesel
 - Cycles 4
 - No. of Cylinders 4
 - Displacement 239 cu in. (3.9 L)
 - Torque Rating 305 lb ft (414 Nm) @ 1,500 rpm
 - Rated Speed 2,500 rpm
 - Max. Gross BHP 99 hp (74 kW)
 - Fuel Tank 35 gal (132 L)
 - Air Intake and Engine Block Heater
- Engine Filters**
Two-stage dry air cleaner — centrifugal pre-cleaner with continuous dust ejector and replaceable dry filter element.
Replaceable spin-on fuel filter.
Full-flow replaceable spin-on engine oil filter.
- Electrical System**
Voltage: 12V
Alternator: 95 amp
Battery: 850 cold cranking amps at 0°F

Transmission

- Modulated powershift.
- 4-speed forward and 3-speed reverse.

Axles

- Full-time planetary 4-wheel drive.
- Oscillating rear axle with Stabil-Trak system.

Service Brakes

- Hydraulically actuated inboard wet disc brakes.

Parking Brakes

- Emergency brake with transmission declutch feature.

Tires

- Standard: Air-filled 13.00 x 24 — 12 ply

Cab

- Certified ROPS/FOPS structure.
- Adjustable suspension seat with retractable seat belt.
- Rear view mirrors.
- Lockable covers.

Steering 4-Wheel

- Power steering.
- Operator selectable 4-wheel circle, 4-wheel crab, 2-wheel front.

Instruments

- Instrument cluster with gauges and warning lights.

Controls

- Dual joystick controls.
- Proportional frame tilt, fork tilt and auxiliary hydraulics.

Hydraulic System-Implement

- Piston pump.
- 60 gal (225 L) system capacity.
- Variable flow, load sensitive hydraulic system.
- Load holding valves on frame level, stabilizer, attachment tilt, extend and lift cylinders.

Auxiliary Hydraulics

- Used for all attachments equipped with cylinders or other hydraulic components.
- Consists of valves, controls, and hydraulic lines.

Accessories & Options

Enclosed Cab

Work Lights

Road Lights

Rotating Beacon

Fenders

Tires:

- Foam Filled
- Rock
- Solid
- 15.5 x 25

Attachments

Standard Carriage

- 50 in. (1.3 m) or 60 in. (1.5 m) or 72 in. (1.8 m)

Side-Tilt Carriage

- 50 in. (1.3 m) or 60 in. (1.5 m) or 72 in. (1.8 m)

Swing Carriage

- 72 in. (1.8 m); 90 degrees

Sheet Material Adapter

Tower

- 8 ft (2.4 m); 50 in. (1.3 m) Standard Carriage

Pallet Forks

- 2.36 x 4 x 48 in. (60 mm x 102 mm x 1.2 m)
- 2.36 x 5 x 48 in. (60 mm x 127 mm x 1.2 m)
- 2.00 x 6 x 72 in. (51 mm x 152 mm x 1.8 m)

Lumber Forks

- 1.75 x 7 x 60 in. (44 mm x 178 mm x 1.5 m)
- 2.36 x 6 x 60 in. (60 mm x 152 mm x 1.5 m)

Cubing Forks

- 2 x 2 x 48 in. (51 mm x 51 mm x 1.2 m)

Material Bucket

- 72 in. (1.8 m), 1.0 cu yd (0.76 m³)
- 96 in. (2.4 m), 1.5 cu yd (1.15 m³)
- 102 in. (2.6 m), 2.0 cu yd (1.53 m³)

Grapple Bucket

- 96 in. (2.4 m), 1.75 cu yd (1.34 m³)

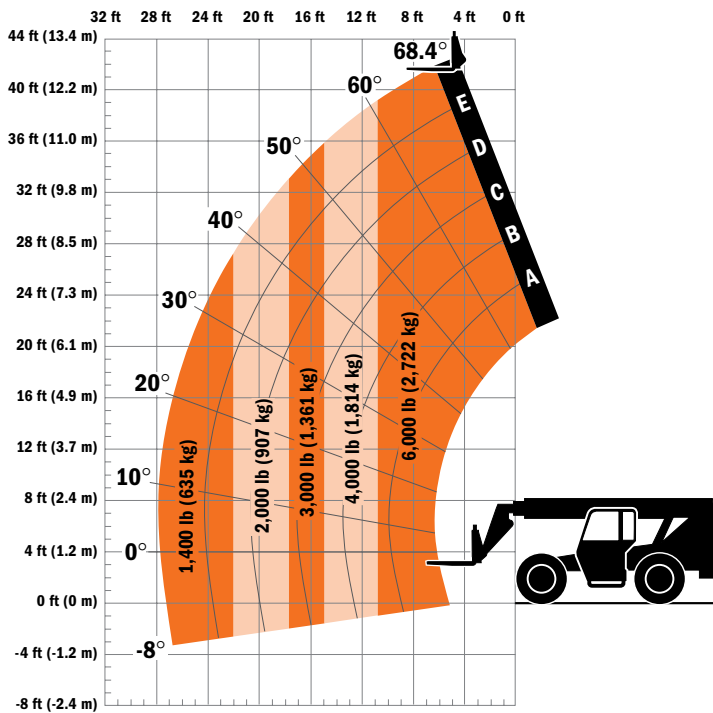
Truss Boom

- 12 ft (3.7 m), 2,000 lb (907 kg) capacity
- 15 ft (4.6 m), 2,000 lb (907 kg) capacity
- 12 ft (3.7 m) with winch, 2,000 lb (907 kg) capacity

Fork Mounted Work Platform

- 8 ft (2.4 m), 1,000 lb (455 kg) capacity

Lifting Hook



Dimensions

Length (less forks)	232 in. (5.89 m)
Width	98 in. (2.48 m)
Height	102 in. (2.59 m)
Wheelbase	113 in. (2.87 m)
Ground Clearance	16 in. (406 mm)
Outside Turning Radius	168 in. (4.26 m)
Max. Reach from Front Tires to 24 in. (609 mm) Load Center	27 ft 11 in (8.51 m)

IMPORTANT

Rated lift capacities shown are with machine equipped with carriage and pallet forks. The machine must be level on a firm surface with undamaged, properly inflated tires. Machine specifications and stability are based on rated lift capacities at specific boom angles and boom lengths. (If specifications are critical, the proposed application should be discussed with your dealer.)

DO NOT exceed rated lift capacity loads, as unstable and dangerous machine conditions will result.

DO NOT tip the machine forward to determine the allowable load.

Use only JLG approved attachments with proper material handler model/attachment load capacity charts displayed in the operator's cab. OSHA requires all rough terrain forklift operators be trained according to OSHA 29 CFR 1910.178 (1).



Due to continuous product improvements, JLG Industries reserves the right to make specification and/or equipment changes without prior notification. This machine meets or exceeds ANSI/ITSDF B56.6-2005 as originally manufactured for intended applications.

Form No.: SS-ST6042-0605-15M
Part No.: 3132402
R010903
Printed in USA

JLG Industries, Inc.

1 JLG Drive
McConnellsburg, PA 17233-9533
Telephone 717-485-5161
Toll-free in US 877-JLG-LIFT
Fax 717-485-6417

www.jlg.com

An Oshkosh Corporation Company